

Dual uniqueness
meets digital vision



BOA & **COBRA**
VISION VISION

Flexible single and dual channel
ureterorenoscopes with sensor technology

BOA & COBRA

VISION VISION

Dual uniqueness meets digital vision

The number of ureterorenoscopies performed continue to increase. **BOA vision** and **COBRA vision** together cover the complete range of applications for this treatment.

Its unique small diameter makes **BOA vision** ideal for all urological treatments. As the only flexible dual channel Sensor URS available in the marketplace, **COBRA vision** is particularly recommended for stone therapy. If the two instruments are used together in clinical application, they meet the requirement of the urologist for universal application options.



Image sensor at the tip of the instrument

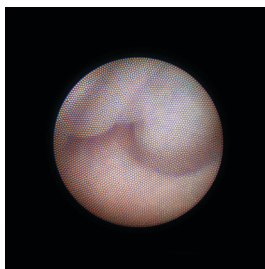
270°

Deflection upward/downward

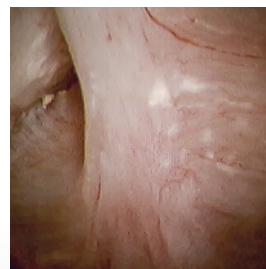
Sensor technology

These Richard Wolf endoscopes are manufactured with the most advanced technology, producing a vivid image sensor at the tip of the instruments; yielding a significant advantages compared with conventional fiber technology.

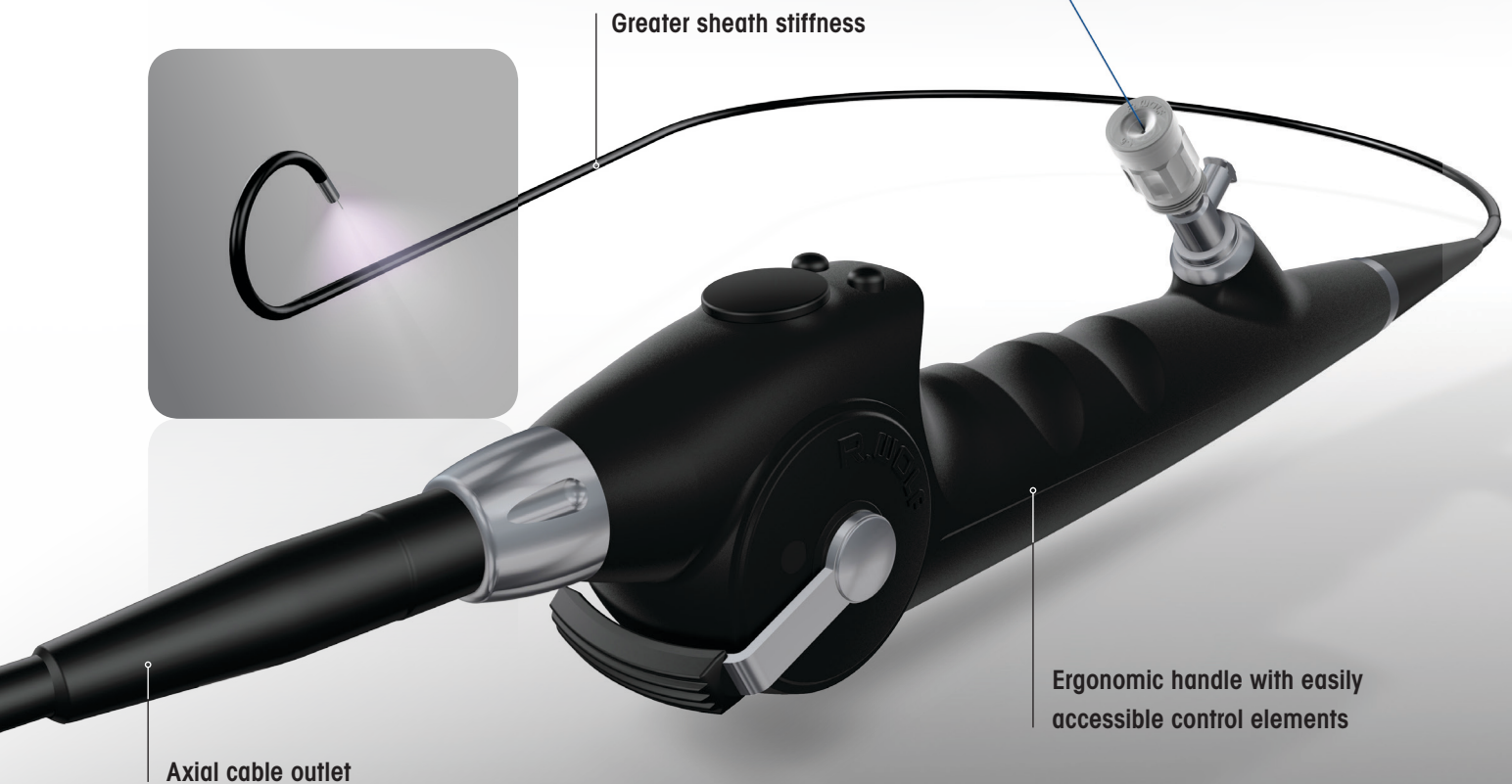
- Brilliant image quality, high-contrast images
- No manual focusing necessary
- No manual white balance necessary



Conventional fiber URS



Sensor URS



Maximum flexibility

- 270° deflection upward/downward, also with appropriate auxiliary instruments and laser fibers
- Reaches virtually any anatomical target

Perfect control

- Greater sheath stiffness for easy introduction and controlled movement
- 1:1 torsional stiffness

More light

- LED technology for homogeneous illumination
- No separate light source and light cable necessary

High level of safety

- Atraumatic, oblique stainless steel tip

Consistently ergonomic

- Ergonomic handle with easily accessible control elements
- Lightweight; by eliminating camera head and light cable for more comfort and precise operation
- Axial cable outlet for easy handling

Impressive overview

- Endoimage can be enlarged in 6 stages



The multi-talented instrument for all-round application



BOA vision is uniquely slim with a stiffer shaft. This means that the Richard Wolf flexible single-channel Sensor URS is ideally suited for very difficult anatomy, as well as children—making it incredibly versatile. The latest technology opens up additional opportunities for operating comfort and better patient outcomes.

- Sensor URS fits through a 9.5 Fr. access sheath
- Universal single channel Sensor URS
- Large 3.6 Fr. working and irrigation channel for high-performance and continuous unrestricted view
- Slim and continuously cylindrical sheath
- Optimized channel position for precise working; 9 o'clock working channel



Suitable for 9.5 Fr. Access Sheath

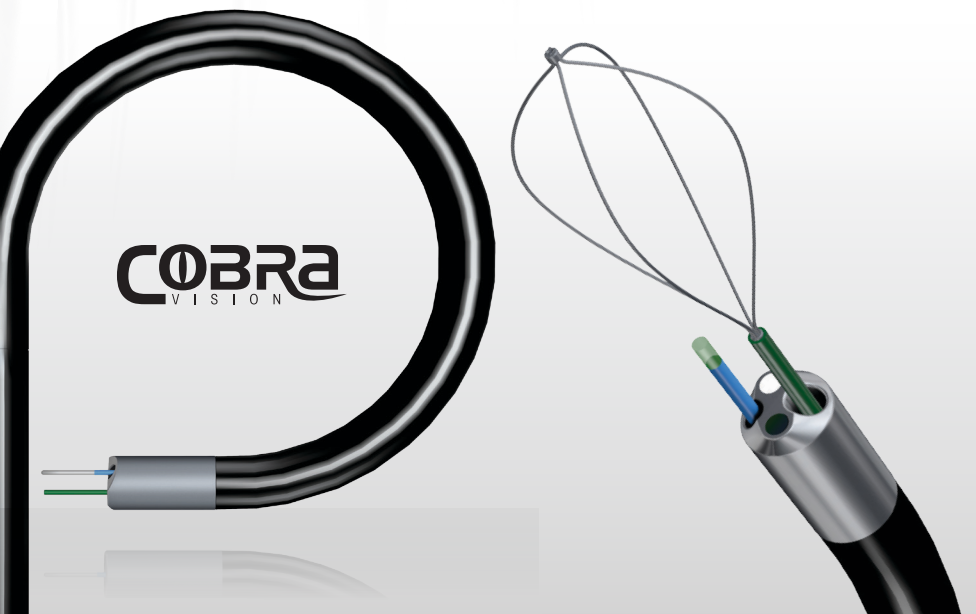


270° deflection in both directions with inserted auxiliary instrument ...

COBRA vision provides exacting performance. As the first and only flexible dual channel Sensor URS on the market, the **COBRA vision** is designed for use in stone therapy. The two working channels permit laser lithotripsy and extraction of concretions without having to interrupt the procedure and change auxiliary instruments. This makes **COBRA vision** the specialist for efficiency.



- The only flexible dual channel Sensor URS available in the marketplace
- Laser and irrigation channel 2.4 Fr.
- Laser channel for fibers up to 365 μm
- Large 3.6 Fr. working and irrigation channel for high irrigation performance and continuous unrestricted view
- Laser shifter controls movement of the laser fiber
- Optimized channel position for precise positioning of the laser fiber and simple collection of stone concretions: laser channel at 9 o'clock, working channel at 6 o'clock



... while using with two auxiliary instruments when using the COBRA vision.

Visualization

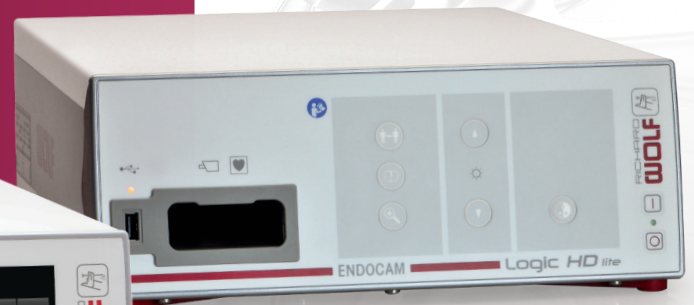
Your view into the future of endoscopic camera systems

BOA vision and **COBRA vision** are operated with the high-performance camera controllers **ENDOCAM Logic HD** and **ENDOCAM Logic HD lite**. A wide range of camera heads expand the application options of the controllers beyond flexible ureterorenoscopy.

ENDOCAM Logic HD *lite*



ENDOCAM Logic HD



**3CCD HDTV camera head,
format 16:9**

Maximum color fidelity and precise detail, e.g. for laparoscopy



**1CCD HDTV camera head,
format 16:10**

Autoclavable and lightweight for universal application



**Pendulum camera head "PENDUAL,"
1CCD HD format 5:4**

Pendulum casing can be easily aligned, also in an axial direction, e.g. for rigid URS



- Software update capability allows for additional features in the future
- Range of high-quality camera heads for diverse applications

Ordering data



COBRA vision flexible Sensor URS Set

comprising:

COBRA vision flexible Sensor URS (7356071 or 7356076), 2x irrigation set V (163910), disposable cleaning brush (pack of 10, 7990001), disposable cleaning brush (pack of 10, 7990003), adapter (163914), leak tester (163.903), pressure equalization valve (163.904), clamping element, orange (pack of 20, 15394144)

Control lever distal, deflection down 73560711

Control lever distal, deflection up 73560761



BOA vision flexible Sensor URS Set

comprising:

BOA vision flexible Sensor URS (7355071 or 7355076), irrigation set V (163910), disposable cleaning brush (pack of 10, 7990001), leak tester (163.903),

pressure equalization valve (163.904)

Control lever distal, deflection down 73550711

Control lever distal, deflection up 73550761

Suitable camera controller sets

ENDOCAM Logic HD Controller Set

comprising:

ENDOCAM Logic HD Controller (552510x), manual remote control (5525401), USB flash drive 8GB (56540028), CAN BUS Terminator (5590.989), HDMI/DVI D cable lockable 3.0 m (103843), power cable (2440.03) and DVD License (64360816)

Controller:

2 x HDMI out/2x 3G-SDI out/PIP in/Analog out 55251081

You will find all other equipment versions in our brochure

"ENDOCAM Logic HD – The Future is Logic" (A 668)

ENDOCAM Logic HD Lite Controller Set

comprising: ENDOCAM Logic HD Lite Controller (5525201), manual remote controller (5525401), USB flash drive 8GB (56540028), HDMI/DVI-D cable interlock 3.0 m (103843)

and power cable (2440.03) 55252011

Recommended monitor

LCD Monitor Radiance 26" G2 HB

for a brilliant Endoimage 5370226

also:

26" desktop stand 53700260

Recommended accessories

Adapter with instrument port (stopcock) 7305.782

Sterile universal sealing valve, pack of 5 4712348

Luer sealing cap

for closing the 2nd luer connector 15023205

Adapter

for machine leakage test 163.905

Laser adjustment unit, complete 15369108

for this:

Clamping element, orange (pack of 20) 15394144

Rinsing set V (2 sets recommended for COBRA vision)

with double luer lock tube connector

for flexible ureterorenoscopes 163910

Technical data



Technical data

Distal tip: cylindrical, atraumatic, oblique,
distal stainless steel tip 6.6 Fr.

Sheath diameter: 8.9 Fr.

Number of working channels: 1

Working/irrigation channel diameter: 3.6 Fr.

Angulation: 270° upward, 270° downward

Working length: 680 mm

Viewing angle: 90°

Handle: integrated LED lighting, ergonomically
contoured handle with axial camera cable

Positioning of the working and irrigation channel
to the image: at 9 o'clock

Endoimage: Square, 6-fold size adjustment, automatic light control
and focusing

Endocamera: Compatible with all ENDOCAM Logic *HD* Controllers
and the ENDOCAM Logic HD *lite* Controller



Technical data

Distal tip: cylindrical, atraumatic, oblique stainless
steel tip 5.2 Fr.

Sheath diameter: 9.9 Fr.

Number of working channels: 2

Working/irrigation channel diameter: 3.6 Fr.

Laser/irrigation channel diameter: 2.4 Fr.

Angulation: 270° upward, 270° downward

Working length: 680 mm

Viewing angle: 90°

Handle: integrated LED lighting, ergonomically contoured
handle with axial camera cable

Positioning of the working and irrigation channel to the image:
at 6 o'clock

Positioning of the laser and irrigation channel to the image:
at 9 o'clock

Endoimage: Square, 6-fold size adjustment, automatic light control
and focusing

Endocamera: Compatible with all ENDOCAM Logic *HD* Controllers
and the ENDOCAM Logic HD *lite* Controller

Contact your local Richard Wolf representative for details.